

SAFEGUARDING YOUR CAMEOfm DATA WHEN UPGRADING TO VERSION 1.1

READ THIS BEFORE YOU UPGRADE TO CAMEOfm 1.1

The CAMEOfm 1.1 installation will overwrite all of your existing data in CAMEOfm 1.0!!

To safeguard your data, you should make a **BACKUP** of your CAMEOfm files **BEFORE** you begin to install the new version. Fortunately, CAMEOfm's Export utility provides an easy way to accomplish this. Using the procedure below, you can quickly save a copy of your data. The export file created in this way can be copied back into CAMEOfm 1.1 after installation.

In addition, you may wish to save the following files

Save all files in the following CAMEO folders:

C:\CAMEO\CAMEOMAP

C:\CAMEO\SitePlans

It's also a good idea to save the following file sets in MARPLOT:

C:\MARPLOT\SEARCHES

C:\MARPLOT\VIEWS

Note: CAMEOfm 1.1 will not replace the CAMEOMAP, SitePlans, Searches and Views files but it's a good idea to save them anyway.

PART 1 - SAVING YOUR CURRENT CAMEOfm DATA

Step 1 - Create a new folder, e.g., C:\CAMEOBACKUP, on your computer.

Step 2 – Export all of your data to a *.zip. (You will be able to re-import this into CAMEOfm 1.1.)

1. From Navigator screen, select the *File* pull-down menu.
2. On the *File* pull-down menu, select *Import/Export*

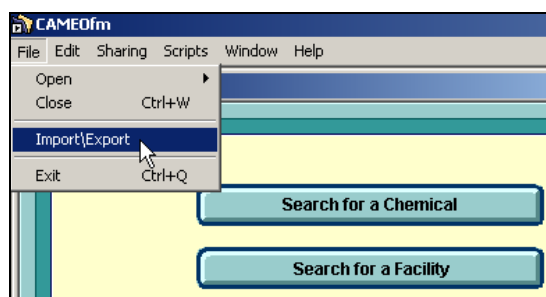


Figure 1
On the *File* pull-down menu, select *Import/Export*

3. On the *CAMEO Import/Export* dialog box, select *Export*.
4. On the *Export CAMEOfm Data* dialog box, click on the *Export* button
5. Click on the *Export ALL CAMEO data* button

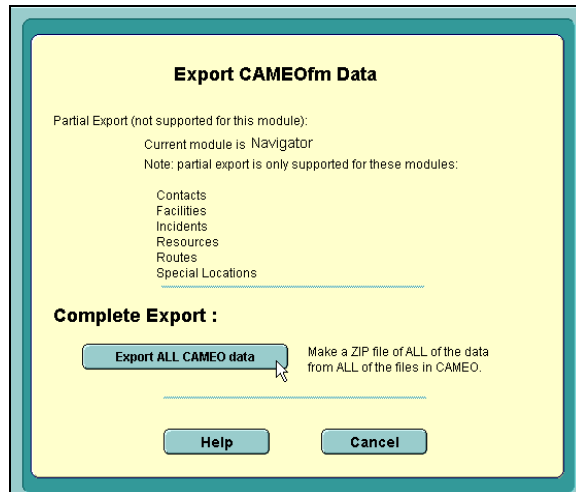


Figure 2

On the Export CAMEOfm Data dialog box, click on the *Export* button

6. When the *Save As* dialog box, browse to C:\CAMEOBACKUP [or C:/CAMEO/ExportFiles]
7. Assign a file name you can remember for the
8. Click on the *Save* button

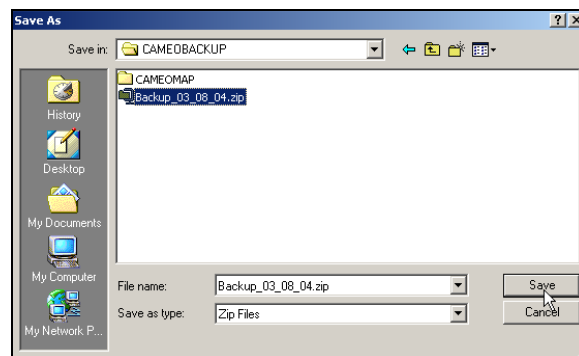


Figure 3

When the *Save As* dialog box, browse to C:\CAMEOBACKUP

9. When the *IMPORT/EXPORT LOG* progress window appears, **WAIT** for the message box to appear saying *Export of records complete*
10. Click the *OK* button
11. Click the *Done* button

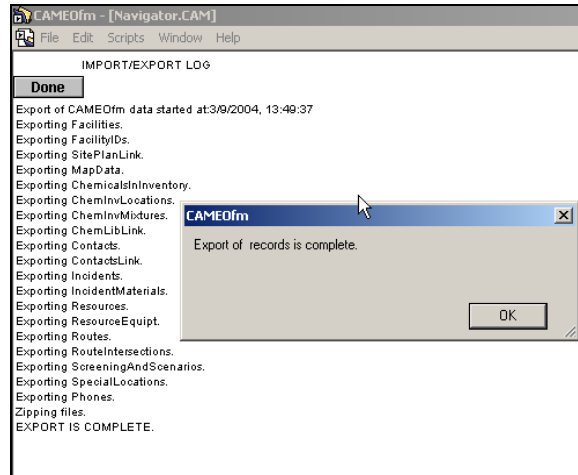


Figure 4

WAIT for the message box to appear saying *Export of records complete*

SAVE OTHER IMPORTANT FILES (Optional but strongly recommended)

There are several other file sets you should consider saving. These include:

- The files that link your CAMEOfm records to your MARPLOT map
- Any SitePlan drawings linked to CAMEOfm records
- Any MARPLOT Views you have created
- Any MARPLOT Searches you have created

Step 1 - Save your MARPLOT/CAMEOfm map link files

1. Using your Windows Explorer, Browse to your C:\CAMEO folder
2. Select the C:\CAMEO\CAMEOMAP folder and click Edit>Copy
3. Browse to the C:\CAMEOBACKUP folder you created earlier and click Edit>Paste

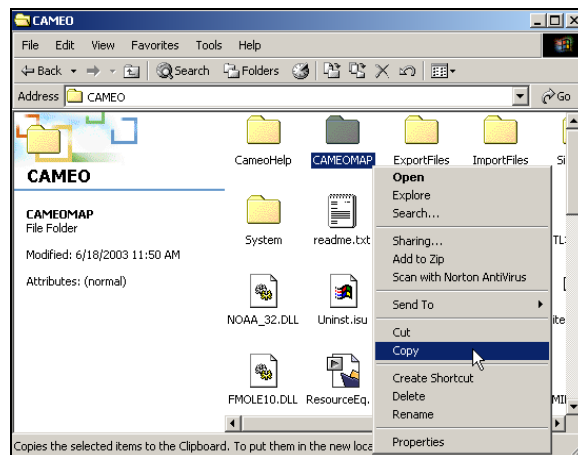


Figure 5

Select the C:\CAMEO\CAMEOMAP folder and click Edit>Copy

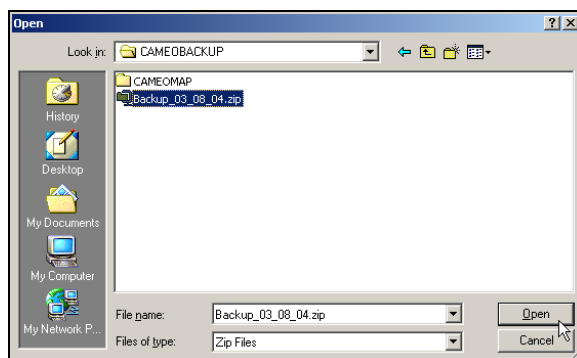


Figure 6

Browse to C:\CAMEOBACKUP folder and click Edit>Paste

Steps 2 – 4 - Repeat the process for the SitePlans folder (if you use SitePlans) as well as the MARPLOT Searches and Views folders.

MAKE A BACKUP CD

To safeguard your data, you should consider copying the C:\CAMEOBACKUP folder to a CD.

PART 2 - RESTORING YOUR DATA IN CAMEOfm 1.1

Use the following steps to re-import your data into CAMEOfm 1.1

1. From Navigator screen, select the *File* pull-down menu.
2. On the *File* pull-down menu, select *Import/Export*

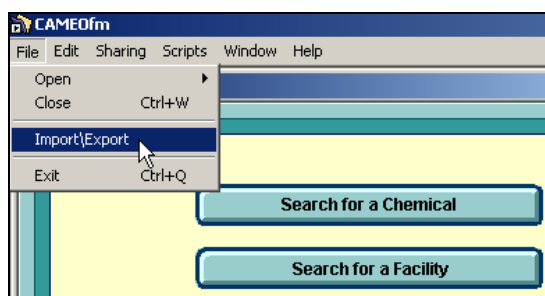


Figure 7

On the *File* pull-down menu, select *Import/Export*

3. On the *CAMEO Import/Export* dialog box, select *Import*
4. When the *Open* dialog box appears, browse to C:\CAMEOBACKUP [or C:/CAMEO/ExportFiles]

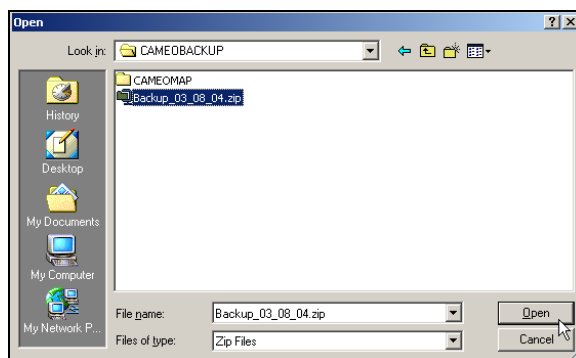


Figure 8

Browse to the C:\CAMEOBACKUP folder and *Open* your Backup file

5. When the *IMPORT/EXPORT LOG* progress window appears, **WAIT** for the message box to appear saying *Import of records complete*
6. Click the *Done* button